

# SITUACIJA URBANISTIČKE PARCELE BR. 6 SA DUP-a "ULCINJSKO POLJE"

R=1:500

Urb. parcela br.6=934.00m<sup>2</sup> u zoni C podzona 18  
Katastarska parcela br. 30/587=925.00 m<sup>2</sup> l.n 849 K.o Ulcinjsko Polje svojina  
Mujalović Emina  
Dio katastarske parcele br. 30/253=9.00 m<sup>2</sup> l.n 3 K.o Ulcinjsko Polje svojina  
Crne Gore raspolaganje Opština Ulcinj

Kordinate tačke urbanističke parcele br.6

14	6603725.96	4642724.92
15	6603759.70	4642699.37
16	6603750.10	4642678.77
17	6603719.26	4642702.12
18	6603717.90	4642707.61

Kordinate tačke regulacione linije

14	6603725.96	4642724.92
16	6603750.10	4642678.77
17	6603719.26	4642702.12
18	6603717.90	4642707.61

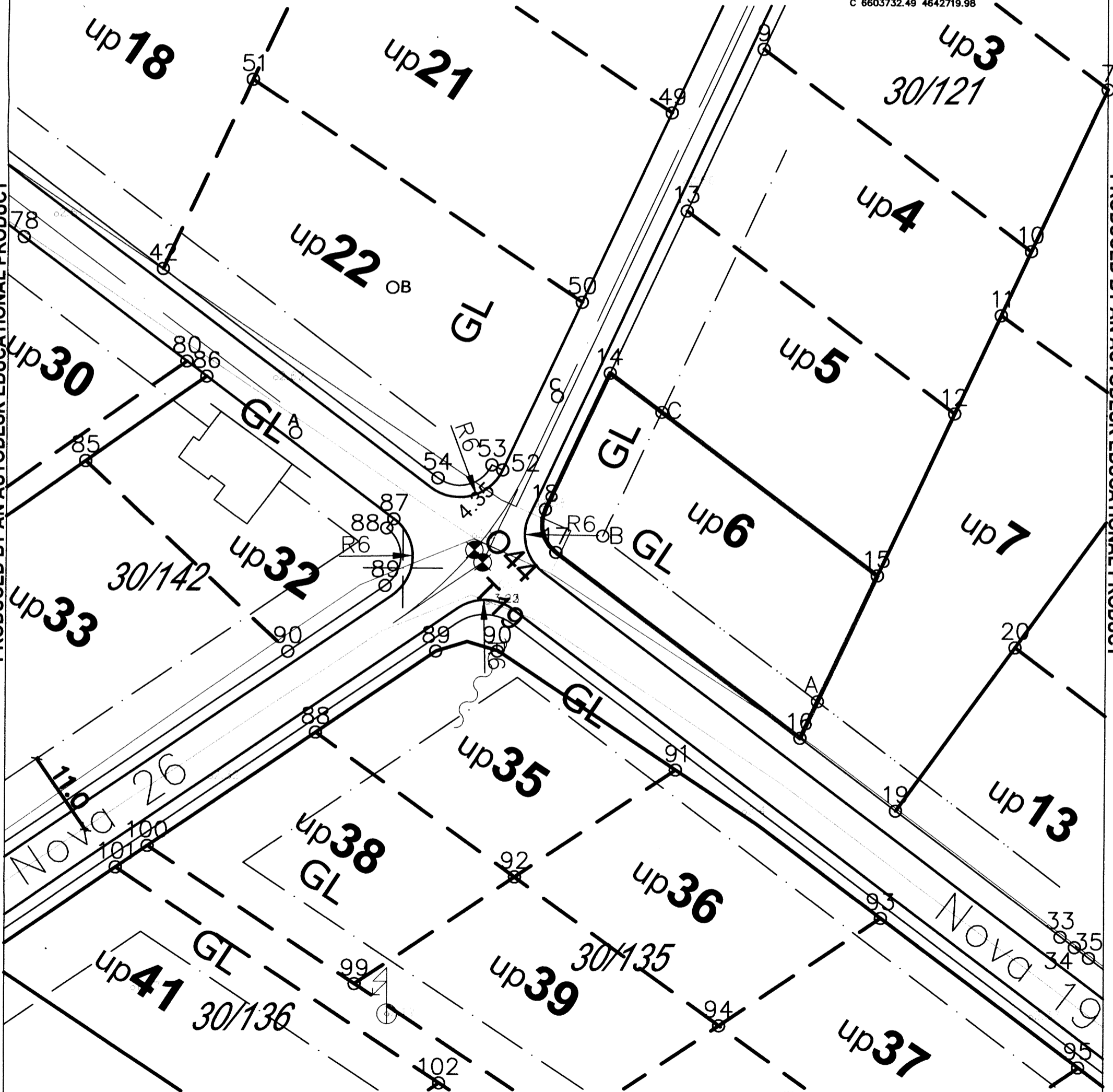
Kordinate tačke gradjevske linije

A	6603752.26	4642683.40
B	6603725.15	4642704.23
C	6603732.49	4642719.98

— Urb. parcela po DUP-u

PRODUCED BY AN AUTODESK EDUCATIONAL PRODUCT

PRODUCED BY AN AUTODESK EDUCATIONAL PRODUCT



Pjeter Dobreci geom

*[Handwritten signature]*

Ulcinj/2015

PRODUCED BY AN AUTODESK EDUCATIONAL PRODUCT



V.D Sekretar,

Mustafa Gorana dip.ing.maš

*[Handwritten signature]*